

STUDIO SAHIL
LONDON

Catalogue
2023

www.studiosahil.com

About Studio Sahil

It's the swish of water in a drinking glass, the curve of a decorative vase, or the moving shadows created by adding light to a room; when you stop to ask questions about the objects you encounter every day, stories and connections start to emerge. What raw materials went into the finished product? Who has touched it along the way? Studio Sahil creates objects that bring these underlying narratives to light. Our designs are more than just beautiful finished products—they are timeless testaments to materiality, process and culture.

Sahil is the Turkish word for coast or shore. We look to the natural phenomena, complex patterns and continuous evolution of seaside landscapes to inspire and inform our practice. Each piece is handmade from organic materials by Rezzan Hasoglu and local artisans, using materials and techniques that respect the environment. We pay attention to how our designs connect with our daily experiences, how they narrate a story and how they draw attention to the often-unnoticed details of everyday life.



Collectibles

Snæfellsnes Vessel

Imposter Vessels

Sand to Glass Vessels

Cybele Vessel

Opaline White Vessel

Black Vessel with Black Sand

Decanters

Confetti Bowl

Helios Collection

SNÆFELLSNES VESSEL

The design of this vessel draws inspiration from Iceland's volcanic Snæfellsnes peninsula, particularly the distinctive landscapes and literary importance of the region. In Jules Verne's 'Journey to the Centre of the Earth,' the main characters explore a mysterious lost world inside a glacier located in this very peninsula.

To symbolise the dormant volcano, the vessel is crafted in a smoky colour and incorporates obsidian sand, a naturally occurring glass found in gravel.

ø 25 x 25h cm, single edition
Photography by Ingimar Einarsson



IMPOSTER VESSELS

The images are generated by an AI tool, with keywords such as "hand blown Glass, vase, white, sand, contemporary, on a plinth at an exhibition". The series of visual products questions the history of Glass: formal and tacit knowledge, design processes, talent and emerging technologies, the gap between digital creation and the future of creative industries.

Photography by Ingimar Einarsson



AI generated image



Imposter vessel
17 x 18 x 25h

IMPOSTER VESSELS



AI Optical Vessel
ø22.5 x 16h cm



Imposter vessel - Large
18 x 20 x 28h



AI Cut Vessel
ø21 x 16h cm

SAND TO GLASS VESSELS

These collectible design pieces are made-to-order basis, with each vessel individually hand-blown using the incalmo technique and natural sands. The sand can be incorporated as a tactile feature on the outer surface or placed between layers of glass. Variations in each piece are expected due to the handmade nature of the process. The production time for these unique pieces is four to six weeks.



Photography by Paul Plews



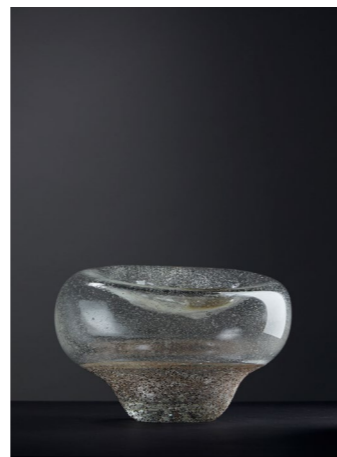
Large Vase
40 x 40 x 35 cm



Medium Vase
30 x 40 x 30 cm



Small Vase
25 x 25 x 35 cm



Bowl
27 x 25 x 15 cm

CYBELE VESSEL

Cybele, an Anatolian mother goddess, possibly traces her roots back to the earliest Neolithic period at Çatalhöyük, where archeological findings include statues of voluptuous women. Recognised as the creator of nature, this cultural influence resonates with my roots as my ancestors hail from Kayseri, a modern city near Çatalhöyük. Notably, some of the earliest obsidian glass objects were discovered at this historical site.

Having grown up in Istanbul, I was immersed in its traditional craftsmanship. The Beykoz Glassware, a lattimi glass adapted by the Ottomans in the 18th Century, captured my interest. An authentic Beykozware can be identified by holding it up to a light source and observing red tints in milky white glass, attributed to the sand in its composition. In my current artistic endeavours, I blend glass with sands from diverse origins. During my trip to Iceland, I stumbled upon the revelation that black sand contains obsidian, a material I had previously utilised in crafting glass vessels long before my discovery of Çatalhöyük. The serendipitous overlap of materials with intangible cultural heritage delighted me.

The handmade vessel employs the incalmo technique, fusing two separate glass pieces in the middle. The lower half is opaque white, reminiscent of Beykozware, while the upper half features glass infused with Rejnifjara sand containing obsidian. This creation forms a complete circle, intertwining cultural heritage, technical expertise, and psychogeography.



OPALINE VESSEL WITH REYNISFJARA SAND

This opaline glass vessel, infused with volcanic Icelandic sand, forms part of my exploration into Beykozware glass, delving into the Ottoman history of glass and an ongoing investigation into the use of various sands in glassmaking.

The original Beykozware vessels were crafted with sand sourced from the vicinity of the Bosphorus. When this sand is melted into glass, it imparts a distinctive red tint when viewed under incandescent light. This unique characteristic served as a means of distinguishing original pieces from imitations in the early 20th century.

In my contemporary practise, incorporating natural sand and referencing this historical information, this vessel becomes a nexus connecting the narratives of glass materiality and psychogeography, completing a full circle of exploration.



BLACK VESSEL WITH VOLCANIC SAND

This glass vessel draws inspiration from volcanoes and natural formations. Crafted as a sculptural piece, it features opaque black glass infused with volcanic sand sourced from Iceland.



DECANTERS

Whether you're serving wine, whisky, or a non-alcoholic beverage, our decanter collection serves as a distinctive statement piece for your dining area. Each decanter is meticulously hand-blown and infused with sand sourced from different locations, such as the volcanic Snæfellsnes peninsula in Iceland and the picturesque Mediterranean coasts.

As coastlines evolve over time, each type of sand is specific to a particular moment and location. When incorporated into the glass, the sand naturally influences and shapes the design, resulting in unique patterns and textures for each piece.

This exclusive collection is available for purchase on our online store, and for those seeking a more personalised touch, we offer bespoke options. You can select the specific sand you desire from our sand library to create a truly unique and customised order.



Ø 27 x 20 h cm
Photography by Ingimar Einarsson

Decanter with Snæfellsnes sand
Decanter with Mallorca sand

Artwork details

- Lead free, hand blown glass with sand
- Safe for drinks
- Hand wash only

CONFETTI BOWL

Resembling the double-wall bowls from our collection, this glass vessel features an opaque white hue adorned with vibrant blue and violet patterns. Its versatile design allows it to serve as both a sculptural statement piece and a functional vessel for small items.



Photography by Rezzan Hasoglu



Ø 20 x 30 h cm, single edition
Photography by Ingimar Einarsson

HELIOS COLLECTION

The Helios collection comprises five vibrant vessels, each infused with sands from distinct coastal locations—Mallorca, Porto Cesarea, Alassio, Otranto, and Sarsala Bay. These sands are carefully selected for their unique properties, all connected by their proximity to the Mediterranean Sea, a popular destination for summer getaways. The colours of the collection draw inspiration from the hues of summer flowers, coastal landscapes, and rock formations found in these regions.

Artwork details

- Single edition
- Hand-blown glass with sands on the outer surface



Made to Order

Sand library

Glassware collection

Made to Order Vessels

Duo collection

Verrier Installation

BESPOKE PRODUCTS

Our collection is not only available as-is but can also be tailored to your preferences through bespoke orders featuring sands from specific origins. Explore our [SAND LIBRARY](#) page on our website to peruse our collection of available sands. Additionally, if you have a particular sand in mind, you can send us a 0.5-litre container of your own.

We take pleasure in personalising these items according to your desired colour and sand selection. Contact us to discuss customisation options and make your order uniquely yours.



Jordan sand



Camogli sand



Vietnam sand

SAND LIBRARY

<https://www.studiosahil.com/sandlibrary>



GLASSWARE COLLECTION

This collection features a bowl, a carafe, a tall cup, and a short cup, designed to showcase the tactile quality of sand. The sands are strategically applied to the outer surfaces, where the glass comes in contact with hands, providing a unique haptic experience. Local glass artists hand-blow each item in the collection.

The sands used in the collection's photos originate from Iceland, Miami, and the Southern and Aegean Coasts of Turkey. Additionally, all items are customisable with sands of your choice, and our sand library is accessible on our website. For bespoke orders, please reach out to us directly.

Product Dimensions:

Short glass (Ø8 x 9 cm)

Tall glass (Ø8 x 14 cm)

Bowl (Ø12 x 10 cm)

Carafe (Ø6 x 24 cm)



Photography by Paul Plews

MULTIPLE ORDERS

For the short and tall drinking glasses, we offer a special pricing option for orders of a minimum of ten glasses. You have the flexibility to mix and match sizes, and our pricing is adjusted accordingly. For more details, please contact us directly.

DUO COLLECTION

The Duo Collection centres around the concept of pairs—two individuals collaborating in the creation process, the utilisation of two types of sands, the formation of double walls, and the connection of two distinct parts.

This distinctive collection incorporates sands from Delikli Koy, the Dubai desert, Miami, Costa Rica, Alaçatı, and Cunda. These sands are newly acquired, contributed by individuals eager to participate in and support this innovative project.



Dual sand vessel Ø18 x 10h cm



Carafe with Reynisfjara sand Ø6 x 24 cm



Double wall bowl with Göcek sand (Ø20 x 10 cm)



Double wall plate Ø28 x 8h cm



Bowl with Kabak Bay sand(Ø18 x 10 cm)



Candle Holder with Sarsala sand (Ø10 x 6 cm)

Custom Installations for Our Clients: VERRIER at Hart Shoreditch

We take pride in offering bespoke installations for our clients, and one such permanent sculpture is the captivating creation named "Verrier," designed and crafted for Hart Shoreditch.

Collaboration:

"Verrier" is the result of a collaborative effort between Hart Hotel and Rezzan Hasoglu of Studio Sahil, based in London. This installation weaves a narrative that harmonises with the hotel's rich history of craftsmanship.

Design and Features:

This remarkable installation graces the hotel's lobby entrance, suspended delicately from an iron structure. Illuminated from the base, the glass spheres cast enchanting ripple shadows that elegantly complement the wrought iron spiral staircase. The design pays homage to the silk weavers and Huguenots who settled in Spitalfields during the 17th Century.

Aesthetic Elements:

Featuring copper details and natural tones emanating from the sand-infused glass spheres, "Verrier" provides guests with a moment of mindfulness and playfulness. Moreover, it serves as a visual tribute to the diverse trading history of the local area.

Symbolism:

The common French term for 'silkworm' is 'vers à soie,' derived from 'Verre à soie,' where 'Verre' translates to glass. The glass spheres in "Verrier" symbolise silk cocoons and the historic trading routes of Shoreditch. The selection of sand from continents worldwide represents the diversity of international visitors to Hart Hotel.



Photography by Ingimar Einarsson

"Verrier" stands not just as a physical art piece but as a timeless narrative connecting the past and present, inviting guests to experience a moment of cultural and historical reflection.

Artwork Details:

Title: Verrier

Date: April 2023

Type: Permanent Glass Installation

Venue: Hart Shoreditch, 61-67 Great Eastern St, London EC2A 3HU



Photography by Ingimar Einarsson

Products

Single Editions

Cake stand + sauce bowl

Moirai Lamps

Idyllic Summer Collection

Companion Collection

9¾ Scarf

Cappadocia Jewelry

Symbiosis Collection

SINGLE EDITIONS

This exclusive set comprises single edition pieces that push the boundaries through innovative experiments. The intricate processes involved in crafting these unique items include glass blowing into an optic mould, exploring vibrant colour combinations, incorporating two types of sand within a single vessel, and hands-on involvement by the designer herself to advance the development of the process.

The sands used in these extraordinary pieces have been sourced from diverse locations, adding a global touch to each creation. Originating from Iceland, Miami, the Sahara Desert, Bulgaria, and the Aegean Coast of Turkey, these sands contribute distinct characteristics to the singular editions, making each piece a testament to creative exploration and craftsmanship.

Photography by Rezzan Hasoglu



Bowl with Reynisfjara sand (Ø12 x 9 cm)



Small cut vase (Ø15 x 10 cm)



Blue vase (Ø9 x 13 cm)



Glass bowls (Ø10 x 10 cm)



Glass bowls (Ø10 x 10 cm)



Glass bowls (Ø10 x 8 cm)

MOIRAI LAMPS COLLECTION

In the 18th century, during the reign of Sultan Selim the Third, the Ottoman Empire embraced the Venetian filigree glass technique and transformed it into the Çeşm-i Bülbül glassware, characterised by its distinctive white and blue stripes.

Traditionally utilised as giftware and tableware for Ottoman Banquets, Çeşm-i Bülbül glasses held cultural significance. The Moirai Lamps Collection takes inspiration from this rich heritage, reinterpreting the traditional glass blowing technique as a contemporary form language. These lamps not only serve as a homage to cultural legacy but also function as elegant and functional lighting pieces.

Available Colours

- Blue & white stripes
- White stripes
- Black stripes

Electrical Specifications

- 240 V European Plug, standard E27 light bulb
- Works with an adapter for the US and UK system



Shape A



Shape B



Shape C



IDYLLIC SUMMER COLLECTION

This unique collection seamlessly merges the in-calmo technique with "Çeşm-i Bülbül," a traditional Ottoman glassblowing technique. Crafted by skilled Turkish glassblowers, each piece is handmade, resulting in variations in colour and size that add to the distinctive charm of these items, underscoring their artisanal and handcrafted nature.



Large vase (Ø18 x 20 cm)



Medium vase (Ø15 x 18 cm)



Small vase (Ø12 x 15 cm)



Large bowl (Ø24 x 12 cm)



Small bowl (Ø20 x 10 cm)



Photography by Rezzan Hasoglu

CAKE STAND + SAUCE BOWL

This captivating sculptural vessel serves a dual purpose as both a stylish cake platter and a convenient dip sauce snack bowl, maintaining an aesthetic appeal. Currently available in select colours, we are excited to announce plans for a future launch featuring an expanded colour palette.

Product Details:

- Each size varies as these pieces are meticulously handmade.
- Food-safe material ensures the vessel is suitable for culinary use.
- To preserve its quality, handwashing is recommended.

Experience the versatility and artistry of this sculptural vessel, seamlessly blending functionality with an elegant design that enhances your culinary presentations.



Blue and purple mini cake plate
Ø16.6 x 6.5 h cm



Misty white and desert sand regular size plate
Ø25 x 8 h cm



Purple and apricot regular size plate
Ø25 x 8 h cm



Red and violet regular size plate
Ø25 x 8 h cm

CUSTOMISE YOUR CAKE STAND / SAUCE BOWL

You have the option to customise the piece with your preferred colour and choice of sand infused between the layers of glass.

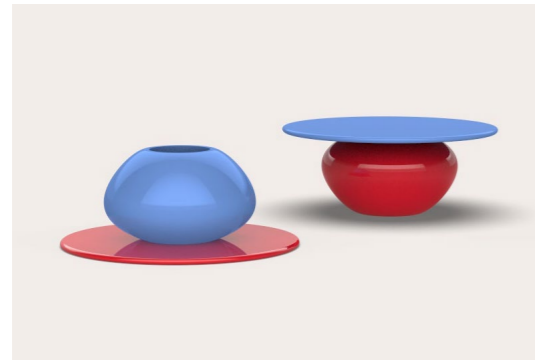
Size options

Mini Ø16 x 6 h cm

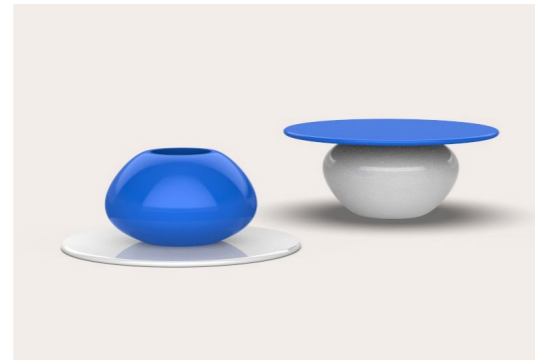
Regular Ø25 x 8h cm



EXAMPLES



Opaque chili red and patterned lavender blue



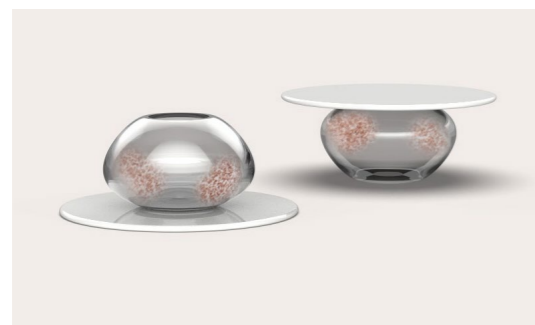
Opalin white and opaque cornflower blue



Patterned chili red with dark heliotrope



Canary yellow with amethyst reddish



Transparent white with clear glass infused with desert sand



Opalin white with opal black

COLOUR OPTIONS & SAND LIBRARY

These are current available colours which can be applied to cake stands.

You can also select sand of your choice from our [SAND LIBRARY](#) and we can combine both options in a food safe method.



Opalin white
Opaque and transparent powder



Light Grey
Opaque, rod



Canary Yellow
Opaque, chips



Amethyst reddish
Transparent, chips



Dark Heliotrope
Transparent, rod



Chili red
Opaque, chips



Emerald green
Transparent rod



Cornflower blue
Opaque rod



Lavender blue
Opaque, chips



Opal Black
Opaque rod

COMPANION COLLECTION

This collection features two distinct designs of silk scarves and cotton bandanas. The first design showcases a vibrant pattern inspired by a gouache painting, while the second design incorporates the signature colours of Studio Sahil.

The silk scarves are meticulously crafted with digital printing and hand-hemmed edges, offering a luxurious touch. Additionally, our collection includes charming cotton bandanas designed specifically for your beloved fluffy companions.

Product Details:

Silk Scarf:

Size: 90 x 90 cm
Digital print on silk with a hand-hemmed edge
Care: Dry clean recommended for silk

Cotton Bandana:

Size: 45 x 45 cm
Delicately designed for your pets
Care: Delicates machine wash for cotton



Photography by Rezzan Hasoglu

9¾ SCARF

Light wool

Drawing inspiration from the interiors of the Grade I listed St. Pancras International in London, the 9¾ scarf is a versatile and stylish accessory. Crafted from light wool, this scarf is designed for both men and women, offering a timeless statement piece for the winter season. The red, green, grey, and beige colours complement a variety of winter coats, and the scarf can be worn in different patterns and styles.

Product Details:

Size: 90 x 90 cm
Material: Light wool with hand-hemmed edges
Unisex design for versatile wear
Care: Dry clean only, please handle with care to preserve its quality and longevity.



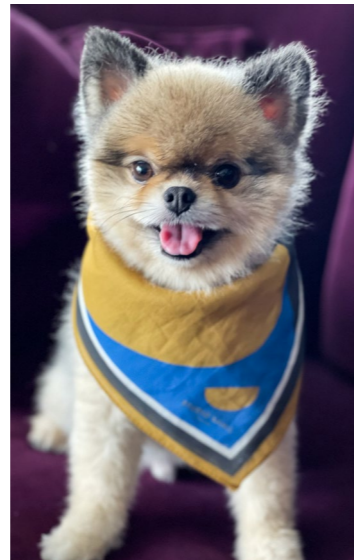
Colourful scarf & bandana set



Studio Sahil scarf & bandana set



Silk scarf (90 x 90 cm)



Cotton bandana (45 x 45 cm)



Elevate your winter wardrobe with the 9¾ scarf—lightweight, warm, and carefully crafted to make a lasting impression while providing a touch of timeless elegance.



Wool scarf (90 x 90 cm)



Photography by Rezzan Hasoglu

CAPPADOCIA JEWELRY

Gold plated silver

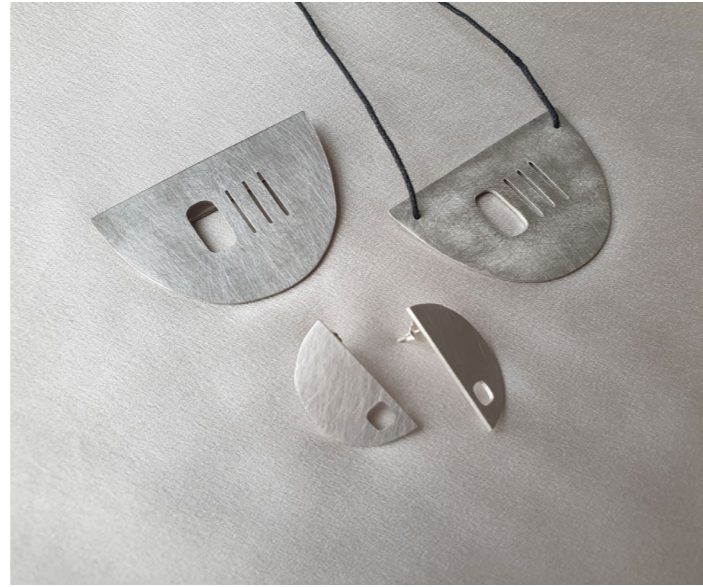
This exquisite collection was born from a journey to Cappadocia, a mesmerising archaeological and geological wonder situated in the heart of Turkey, proudly listed as a UNESCO World Heritage site.

Inspired by the unique rock formations forged through prehistoric volcanic eruptions and the hand-carved houses that bear witness to civilisations past, the jewelry set embodies the distinctive visual language derived from Cappadocia's rich history. Each piece reflects the intricate production techniques, mirroring the laborious handwork employed in the creation of this collection.

Immerse yourself in the allure of Cappadocia through this jewelry set, where the echoes of ancient landscapes and the meticulous craftsmanship converge to create a wearable testament to a UNESCO World Heritage site's timeless beauty and cultural significance.



Silver plated with 24K gold



Silver plated with white gold

Available in

24K Gold plated silver
White Gold plated silver

Necklace (60 x 40 mm)
Earrings (30 x 15 mm)
Needle pin (60 x 40 mm)



Photography by Rezzan Hasoglu

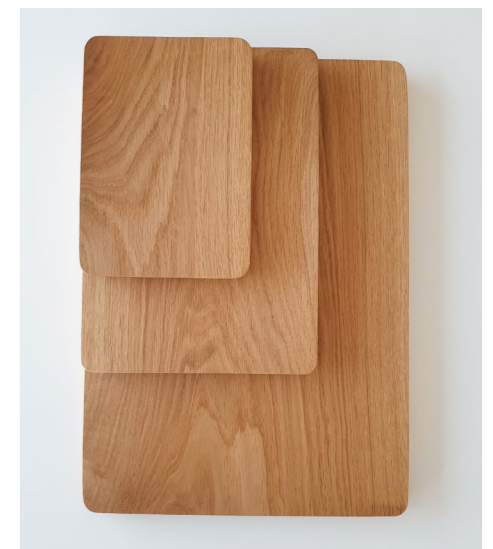
SYMBIOSIS COLLECTION

Wood Cheese Boards

Our handmade cheese boards, are meticulously created in collaboration with small manufacturers based in the United Kingdom. As a design studio, we prioritise supporting artisans, and this collection is a testament to our commitment to their craft.

The set includes three oak boards, thoughtfully sized as A3, A4, and A5, drawing inspiration from international paper dimensions. Coated with a food-safe finish, these boards are not only functional but also exude an aesthetic appeal. To add a personal touch, our logo is elegantly etched behind each board, reflecting our dedication to quality and attention to detail.

Elevate your culinary experiences with these artisan-crafted cheese boards, where design, functionality, and the spirit of supporting local artisans converge to create a truly unique and memorable dining accessory.



TERMS & CONDITIONS

STUDIO SAHIL SHOWROOM - LONDON

Visit our studio showroom in London to experience and shop our products in person. Immerse yourself in the tactile beauty of our creations, and our team will be delighted to assist you.

Studio Showroom

Candid Arts Trust,
First Floor, 3 Torrens St,
London EC1V 1NQ

BESPOKE PRODUCTS & LARGE QUANTITY GLASSWARE

Our sand-infused glass products are tailored for residential projects, restaurants, and hotel interiors. A customised quote will be provided based on quantity, design complexity, and associated costs. For bespoke products, a 50% non-refundable payment is required upon agreement. The lead time for bespoke items is approximately 5-6 weeks, and due to their handmade nature, each product may possess unique qualities.

We also welcome collaborations on new projects such as tabletops, surfaces, tiles, and washbasins. Project scale, lead time, and cost estimates can be provided based on project specifics.

INSTALLATIONS AND EXHIBIT DESIGN

We offer services for both installations and exhibit design. To provide a quote and timeline, we require a clear understanding of your needs and requirements. Please contact us via email for further details and to arrange a meeting.

MATERIAL AND PROCESS

Our products are crafted using sustainable materials, exemplifying the finest quality of craftsmanship.

CARE INSTRUCTIONS

Our glass products consist of different mixes of soda-lime glass and are not resistant to high temperatures. Avoid using them for hot liquids. Studio Sahil assumes no responsibility for damage or injury resulting from product use. Refer to specific care instructions for other products.

SHIPMENT

We offer worldwide shipping. Dispatch times range from one to two weeks, and all shipments are tracked and insured. Most items are packaged in our Studio Sahil box, while larger pieces exceeding 25cm are packed in custom packaging. Art handling companies collaborate on larger items, installations, and exhibition pieces.

DELIVERY ISSUES

In the event of damage or breakage during shipping, contact us immediately, notify the shipping company, and we will work together to address the issue.

EXCHANGE AND RETURN POLICY

Online store products can be returned or exchanged within 30 days of purchase with a receipt. Earrings are non-refundable for health and safety reasons. Ensure the product is in unused condition, especially for wearable items.

For bespoke products, no exchanges or returns are accepted due to their custom design, tailored to your order.

ORDERS FOR TRADE, INTERIORS, AND WHOLESALE

We are delighted to accommodate large quantity orders, calculated based on unit cost, time, design complexity, and materials. Contact Studio Sahil for a production timeline for orders exceeding 10 items.

STOCKISTS

UNITED KINGDOM

Curio

<https://www.curio.space/m/studio-sahil>
London, UK

Mint Shop

www.mintshop.co.uk
3 - 5 Duke St, London W1U 3ED

Matter of Stuff / Arteficius

www.matterofstuff.com

NID Store

<https://nidstore.com/>

Open Space Contemporary

<https://www.openspacecontemporary.com/>

Pamono

<https://www.pamono.com/>

UNITED ARAB EMIRATES

Fine Blooms

www.fineblooms.ae
Boxpark, 433 Al Wasl Road, Dubai, UAE

UNITED STATES

Kollektif.co

www.kollektifco.com
Online Shop based in Chicago, IL

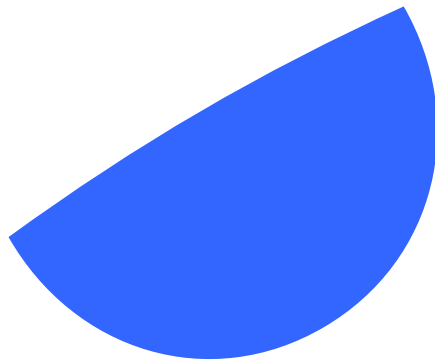
ONLINE SHOPPING

For your convenience, our products are also available for online purchase at Studio Sahil Online Shop. Utilise our secure payment system for a seamless and secure shopping experience.

We look forward to welcoming you to our showroom or assisting you with your online shopping journey at Studio Sahil! Our products are available to see & shop in person at our studio showroom in London. You can also shop online at studiosahil.com/shop and use our secure payment system.

Studio Sahil Limited

Company number 11229731
3rd Floor 86 - 90 Paul Street,
London, England, EC2A 4NE



STUDIO SAHIL
LONDON

Email
info@studiosahil.com

Telephone
+44 (0)7470084587

Website
www.studiosahil.com